

LandSense

A Citizen Observatory and Innovation
Marketplace for Land Use and
Land Cover Monitoring



@LandSense

Motivation

➤ Uncovering the potential of citizen science and earth observation to improve the way we see, map and understand the world

➤ Improving the quality of Earth Observation-based Land Use & Land Cover (LULC) maps/products



Participatory process



Earth Observation-based mapping has a conventional top-down approach



It is possible to involve citizens and interested experts to crowdsource the needed information using a more participatory approach





LandSense

A Citizen Observatory and Innovation Marketplace
for Land Use and Land Cover Monitoring

Connecting citizens with satellite imagery to
transform environmental decision making

September 2016 → August 2020

LandSense.eu



This project has received funding from the
European Union's Horizon 2020 research and
innovation programme under grant agreement
No 689812



LandSense Themes

LandSense technologies are deployed across various themes to illustrate the potential of Citizen Observatories to tackle environmental challenges



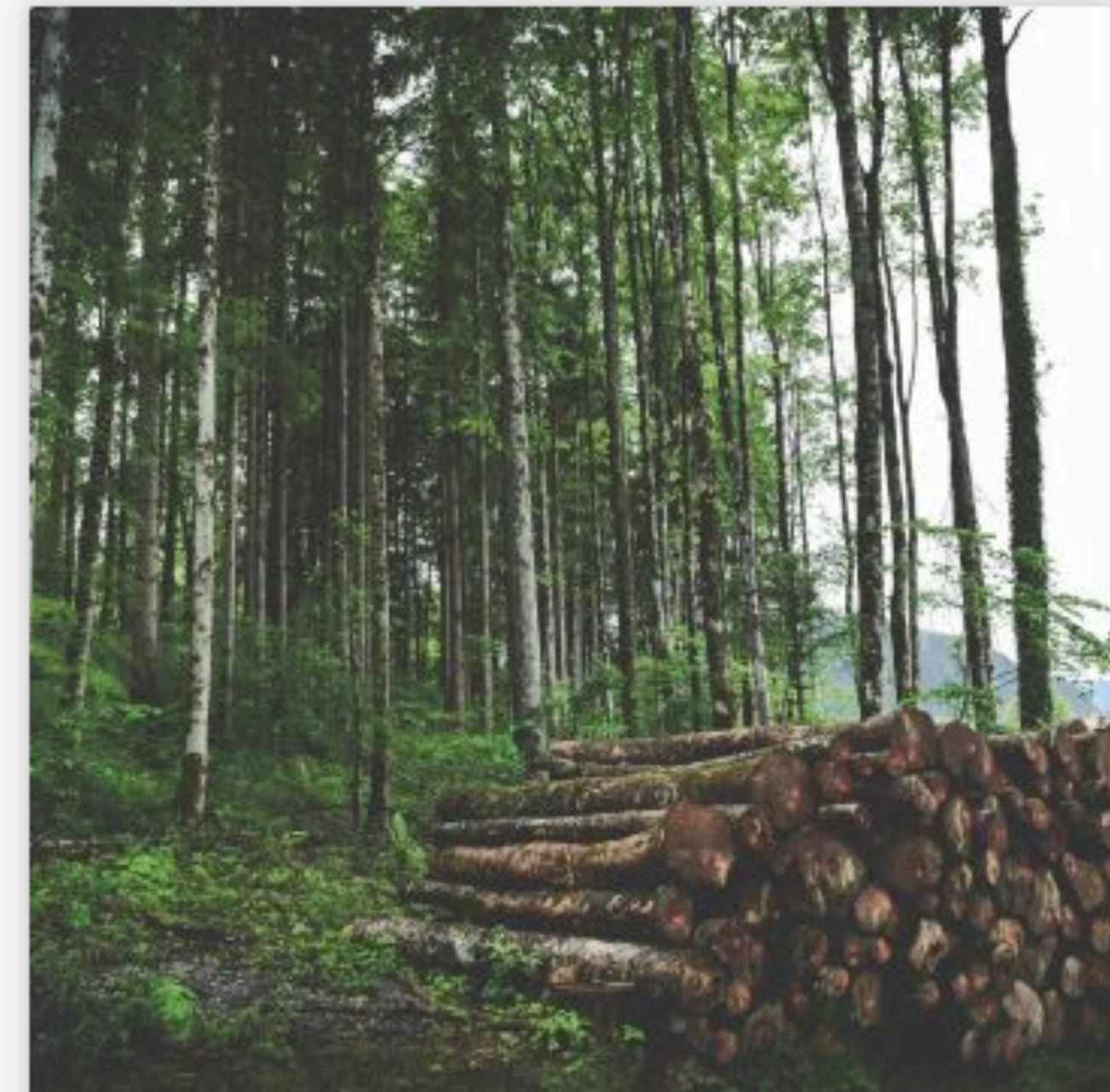
URBAN LANDSCAPE DYNAMICS

*Austria, France, Germany,
Netherlands*



AGRICULTURAL LAND USE

Serbia



FOREST & HABITAT MONITORING

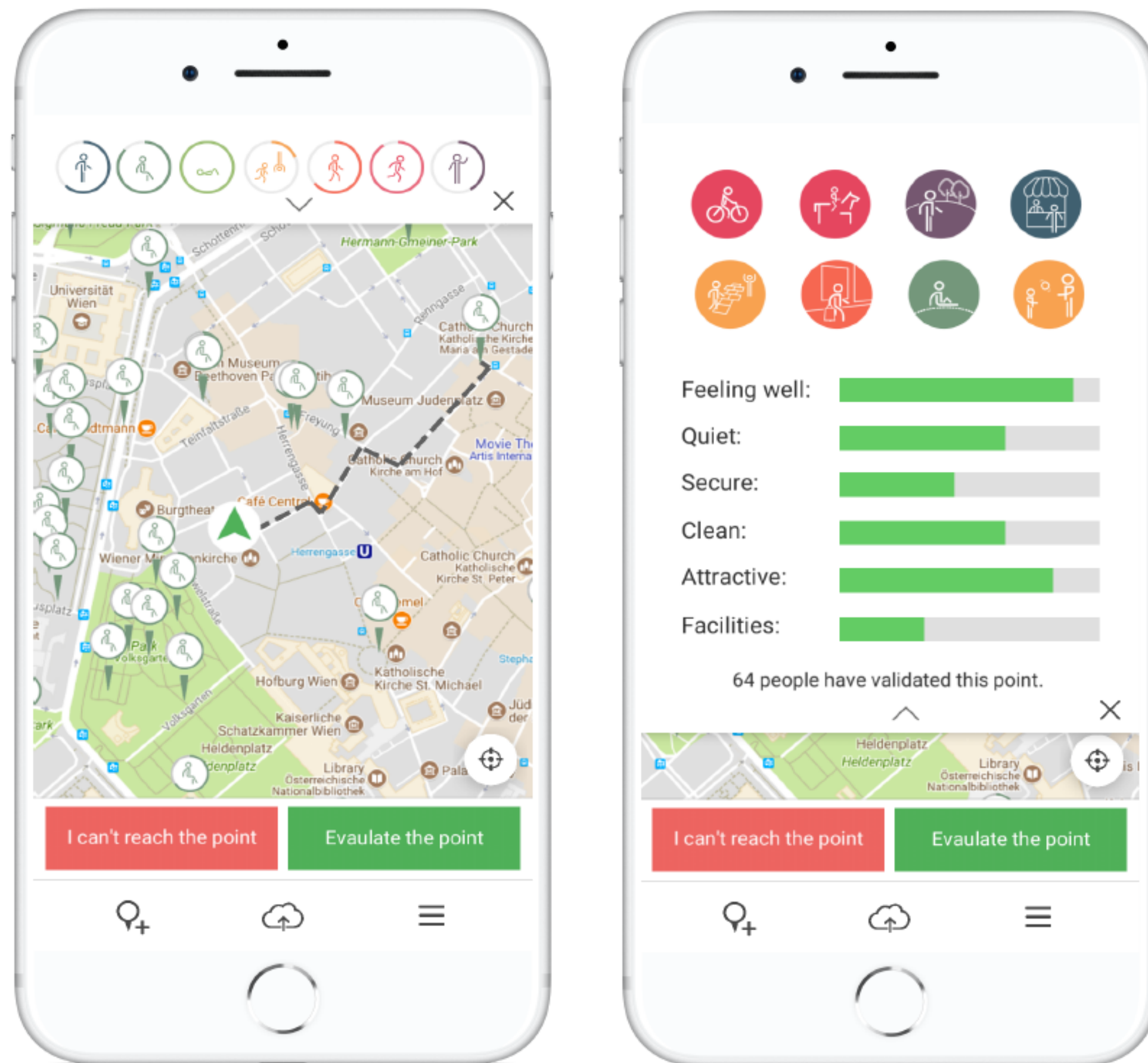
Spain, Indonesia

Participate as a citizen scientist

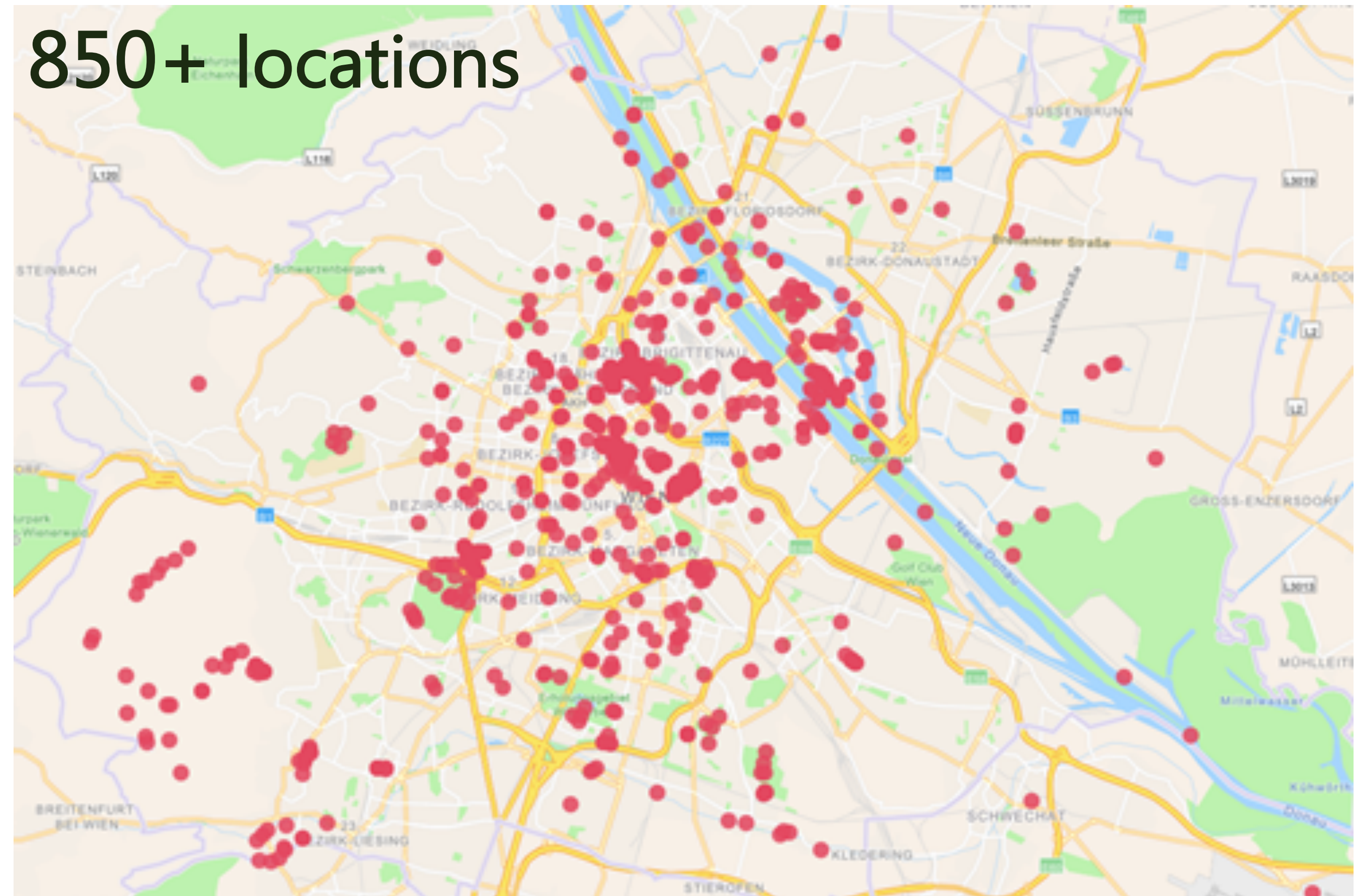
Ground-based observations



Urban green space monitoring in Vienna



850+ locations

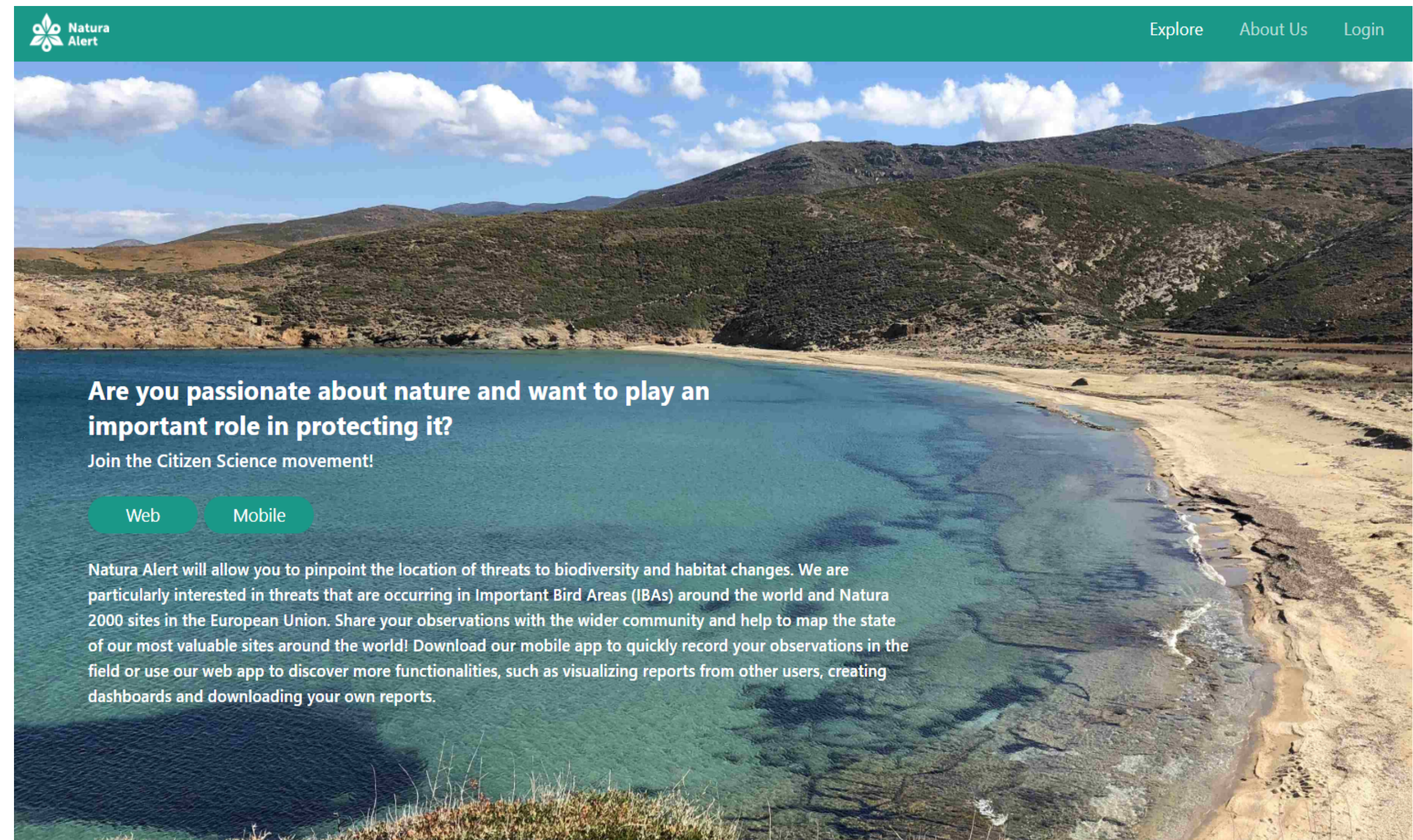
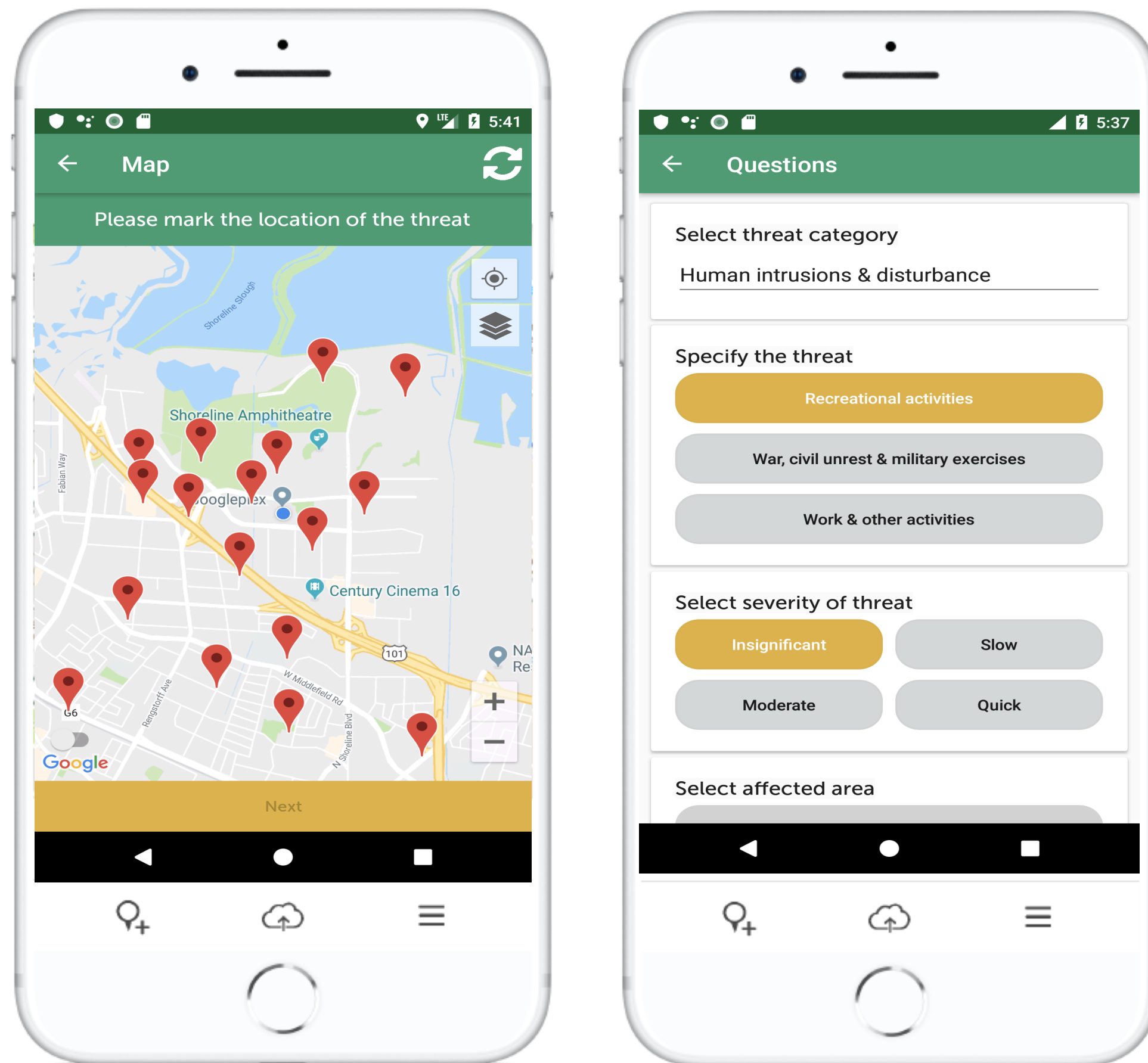


Participate as a citizen scientist

Ground-based observations



Biodiversity threat monitoring in Spain & Indonesia

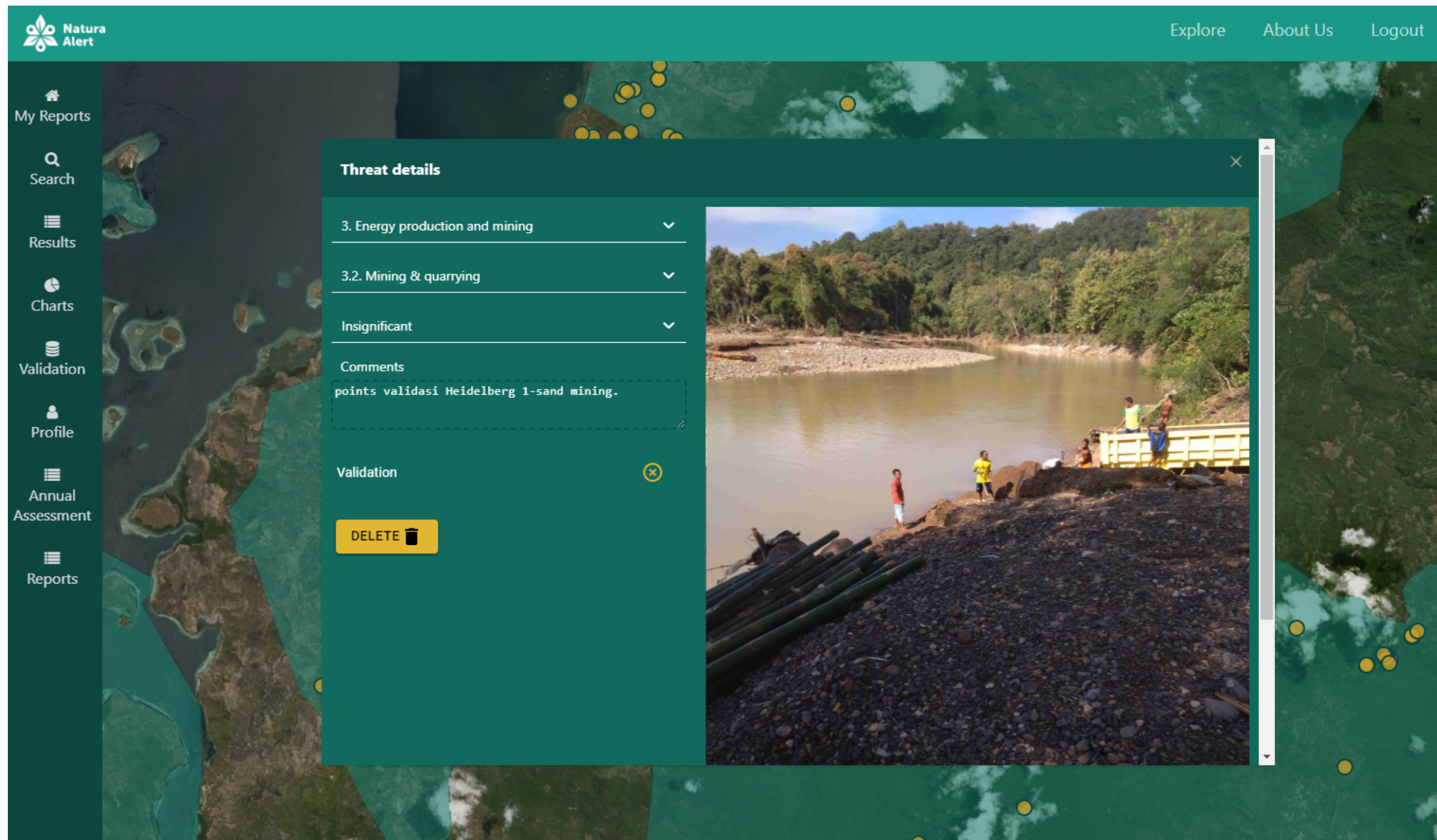


Participate as a citizen scientist

Ground-based observations



Community-driven monitoring of land cover change



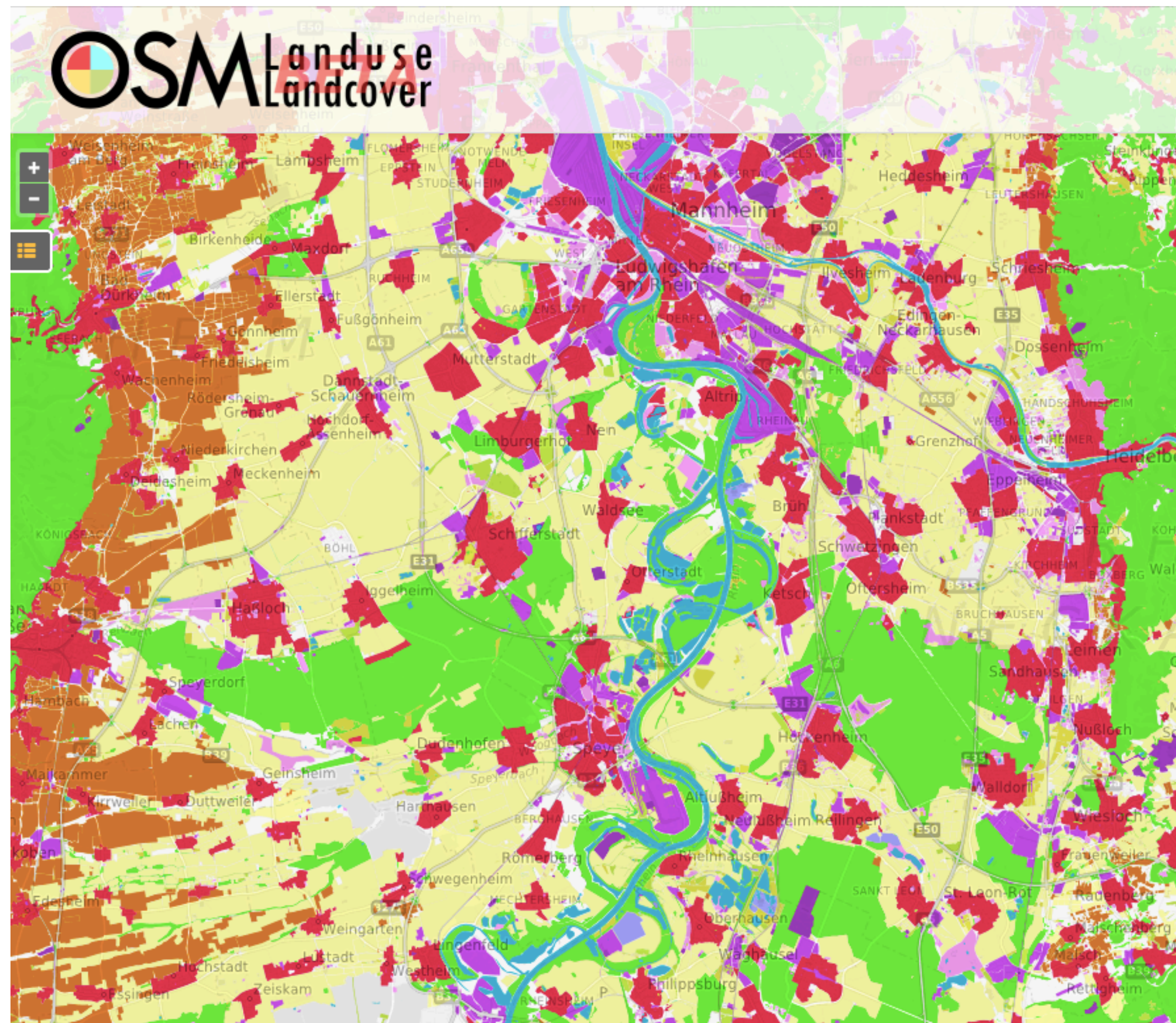
- Village Authorities: leader of 4 villages
- Government agencies at district level: Forest Management Unit, Environment Agency, Planning Agency, Nature Reserve Authority, Agriculture Agency



Participate as a citizen scientist

Online interactive mapping

Validation of OSM LandUse Map via a series of mapathons across Europe



<< Validation # : 3 >>

Classify the object:

- ☒ Urban fabric (11)
- ☐ Skip (99)
- ☐ other land use (100)

Comment

Submit

Sample Information

Sample Item ID 136944

Validated by

Timestamp -

Bing imagery date 07 Aug 2010 GMT

[Download sample \(kmz\)](#)

Participate as a citizen scientist

Online interactive mapping



Rapid image assessment tool based on visual interpretation



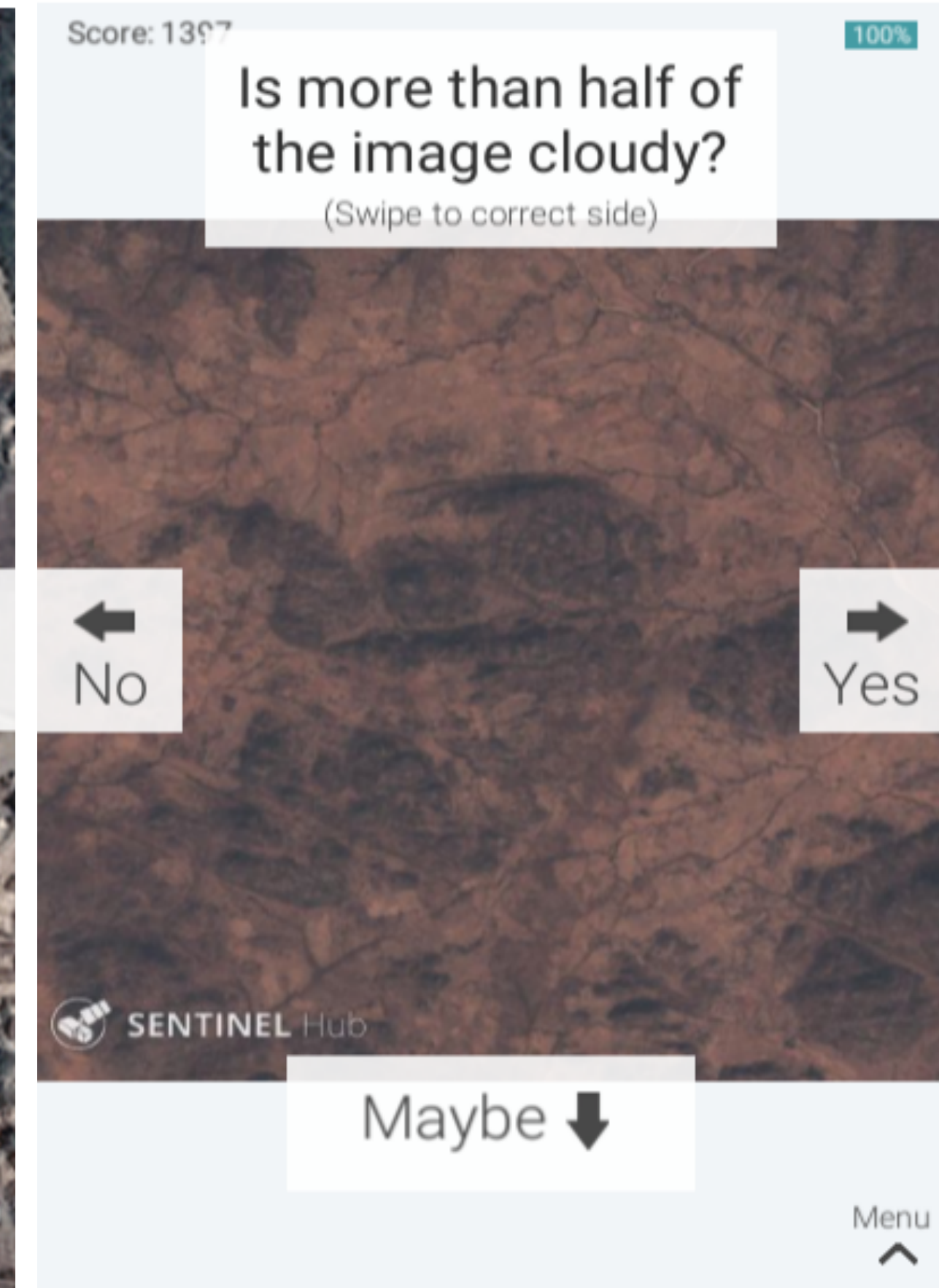
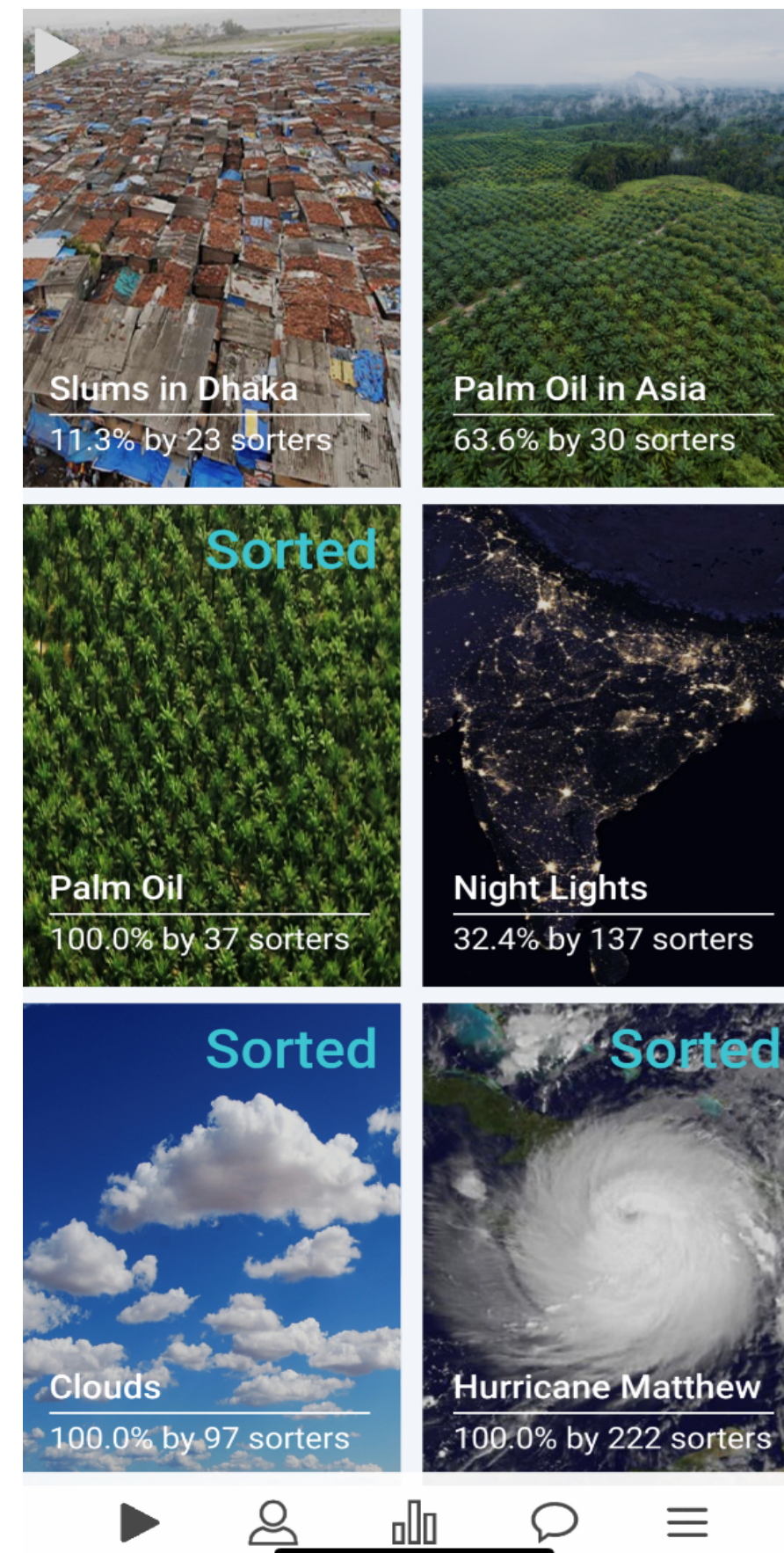
97
volunteers



27K



272K
validations



Collaborate as a practitioner

Register your app and benefit from our tech



Change Detection

Integrate satellite-based change maps into your app for up-to-date environmental monitoring

Quality Assurance

Assess the quality of citizen contributions to create robust and reliable datasets

LandSense Campaigner

Launch your own citizen science campaign and mobilize the LandSense community

LandSense Federation

Single-Sign-On with LandSense partners, Google, Facebook, Academic Federations



2500+ Organizations Worldwide



- Log on with existing credentials and contribute across various LandSense campaigns
- Launch your apps (i.e. target academia)
- Overcoming data and user silos
- Sustainability beyond project (i.e. LandSense does not manage user databases)

LandSense Authorization Server

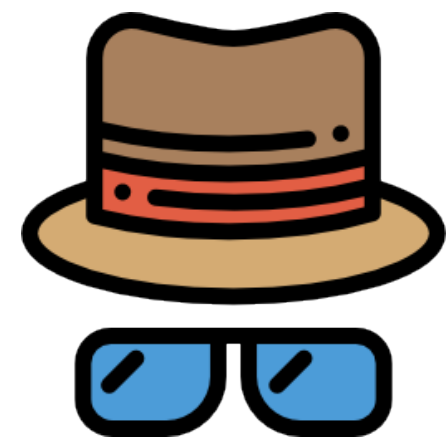
GDPR compliant broker for authentication statements



Authenticated Login
(No personal data)



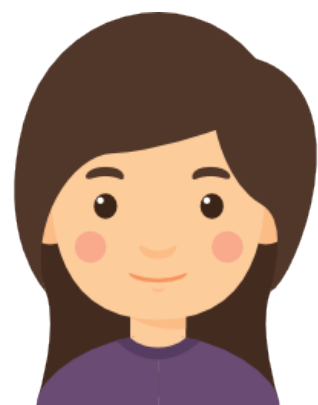
Promotes anonymous contribution



Cryptoname Login
(No personal data)



Promotes anonymous contribution
but allows aggregation



Login (includes personal data)
i.e username, email address



Promotes GDPR-compliant identified
contribution

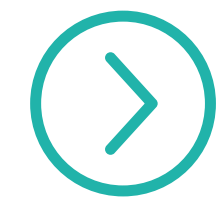
Key Achievements

- Deliver low-cost solutions and innovative in-situ monitoring strategies to key stakeholders
- Emphasize quality assurance of citizen observations (i.e. contributor agreement, GDPR compliant data)
- Establish a scalable federation for citizen science & crowdsourcing
- Foster partnerships to sustain LandSense solutions



Challenges

Awareness



Translating awareness into contributions for the case of mobile applications (i.e onboarding and sustaining participants)



Generating buy-in from public authorities (i.e. overcoming lack of resources in city administration)



Challenges

Acceptability

- Establishing quality assurance measures for citizen science data to increase trust & recognition (i.e. harmonize with traditional sources)
- Addressing privacy & traceability issues of citizen-based contributions (i.e. federated system)



Challenges

Sustainability

- Creating mechanisms/partnerships for continuing project outputs (i.e. leverage NGOs with existing networks)
- Delivering cost-effective solutions to data providers for SDG monitoring (i.e. untapped data sources to support custodian agencies)



LandSense

A Citizen Observatory and Innovation
Marketplace for Land Use and
Land Cover Monitoring



@LandSense